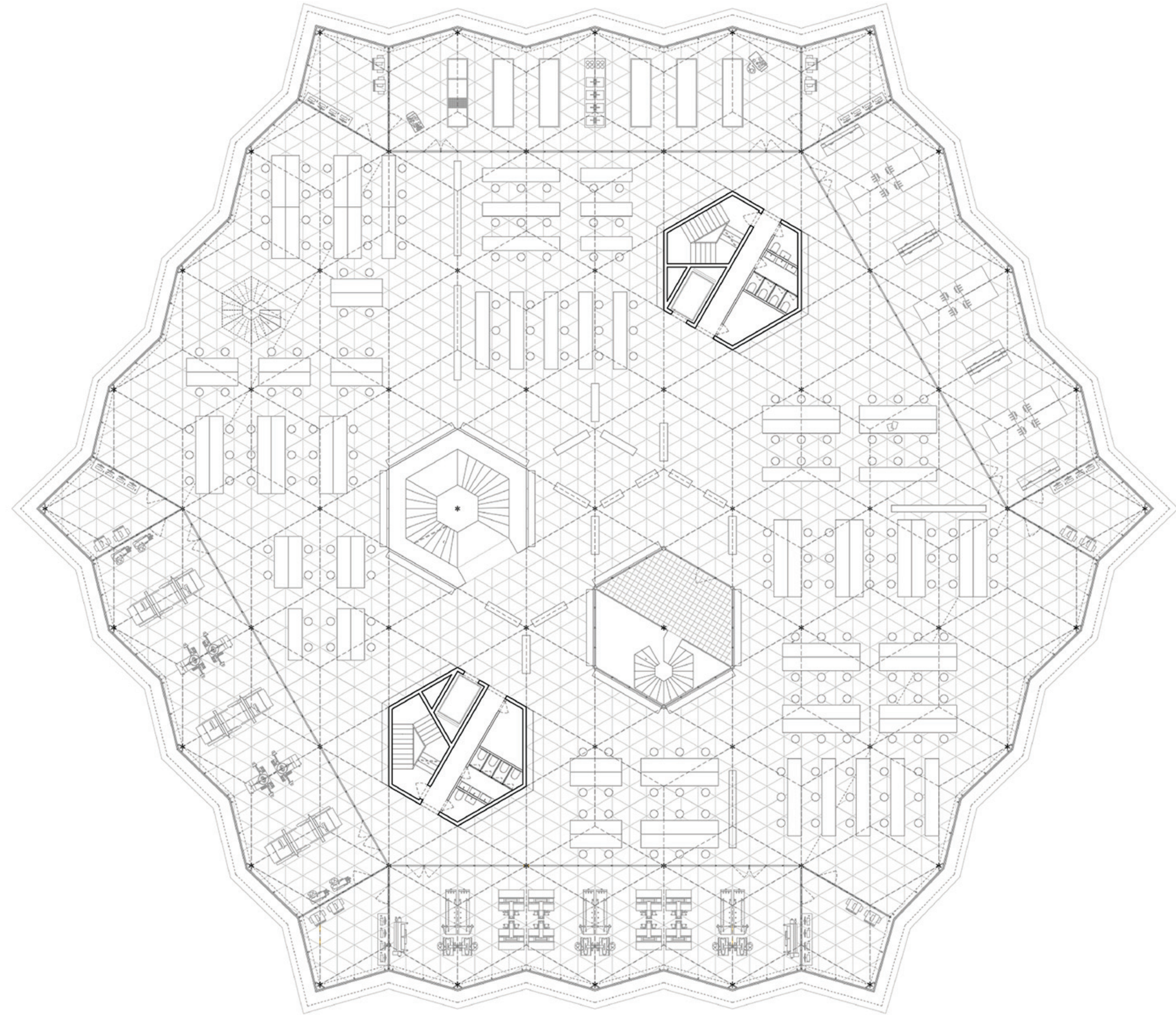


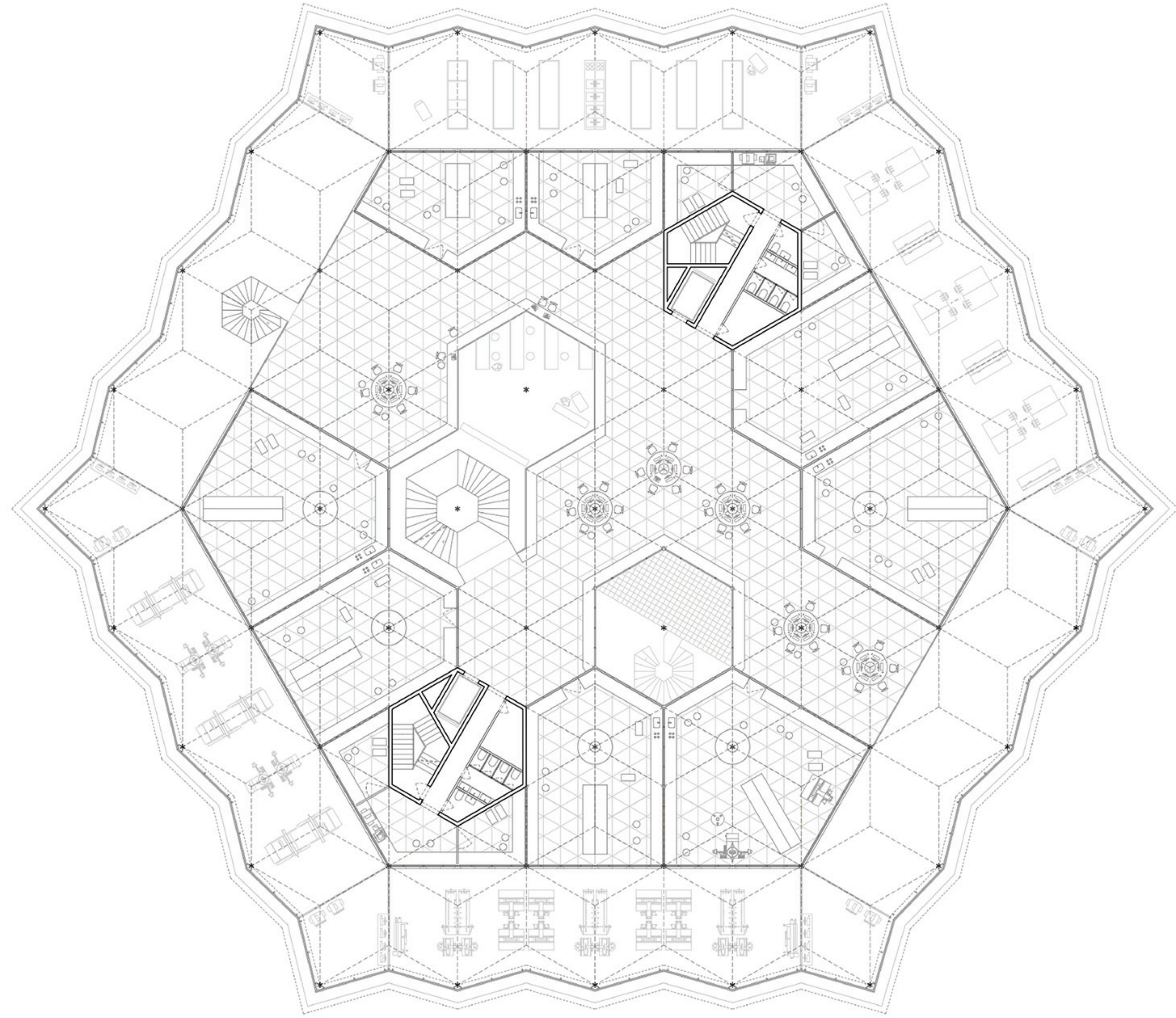
Giulia Anserini

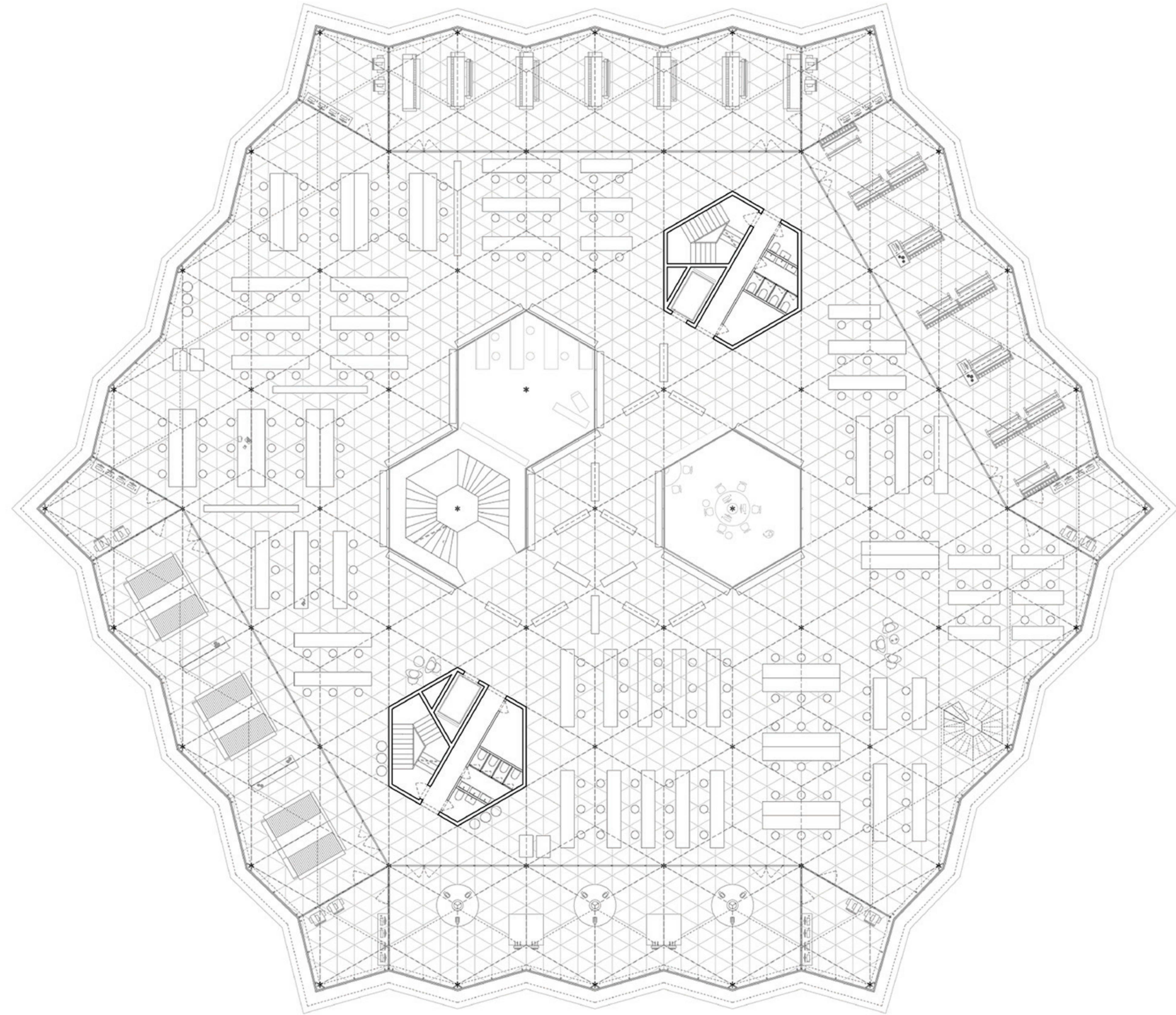
From Textile Tradition to Design
and Innovation

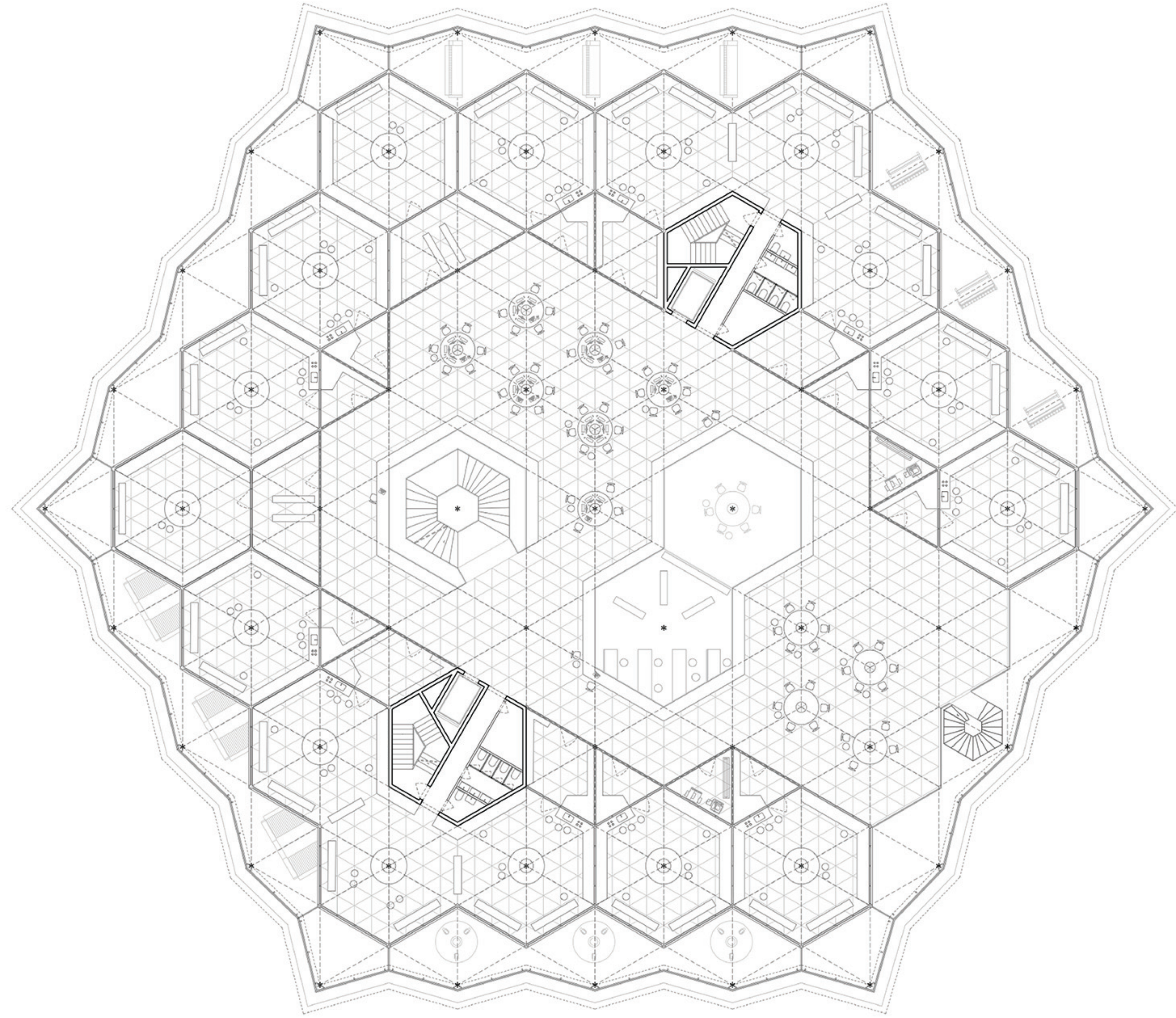
A new University

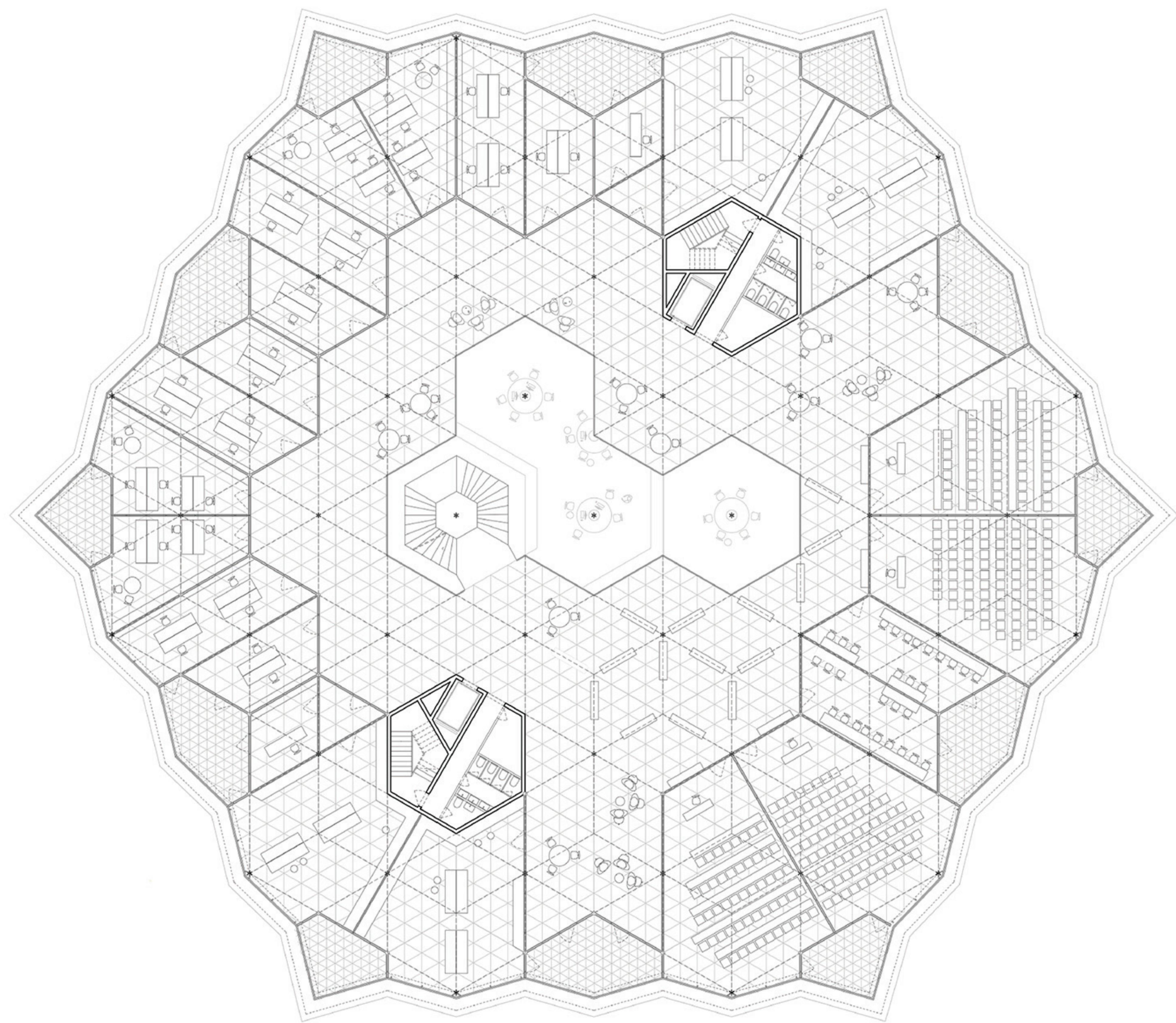
Diploma 2021

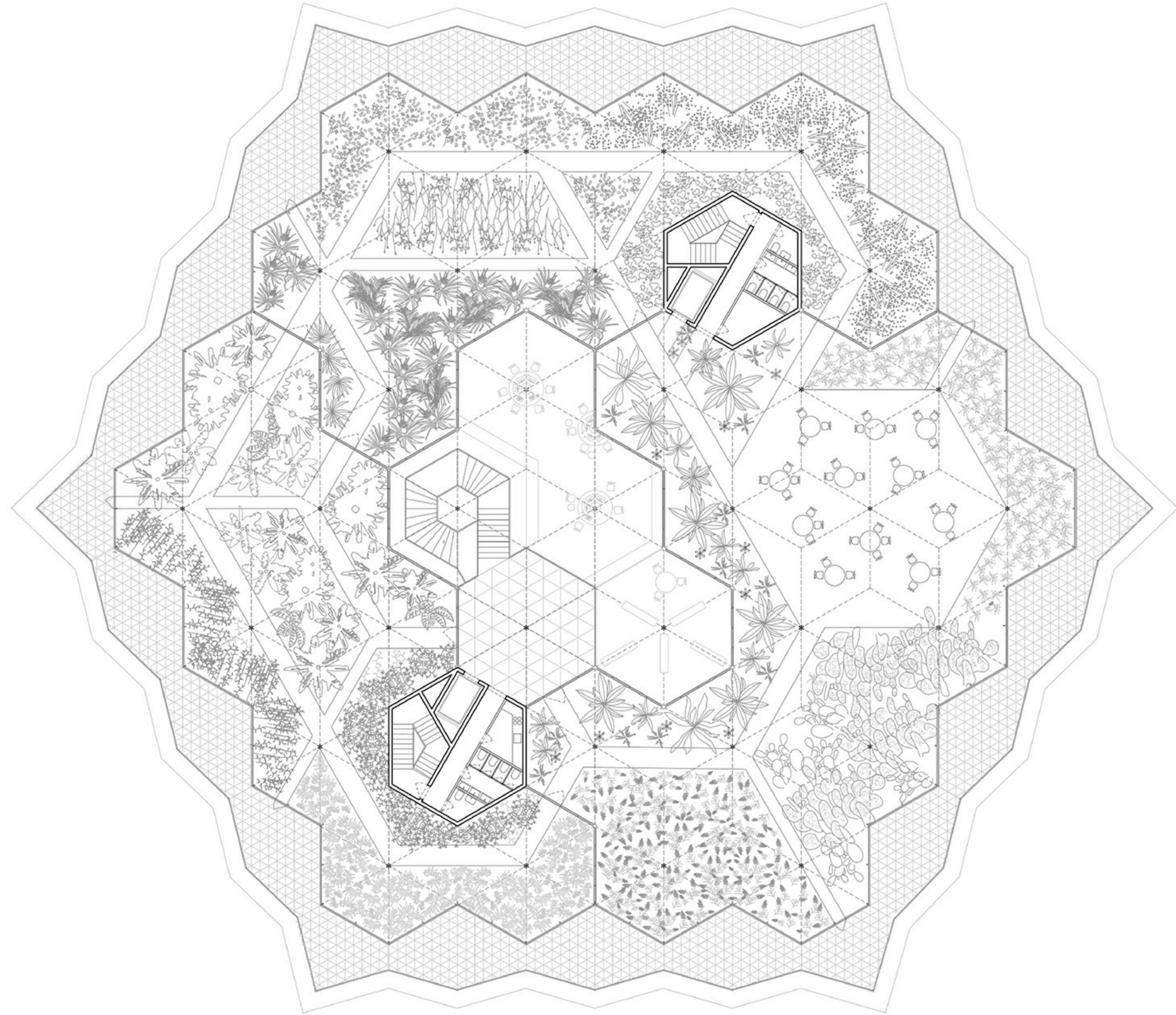












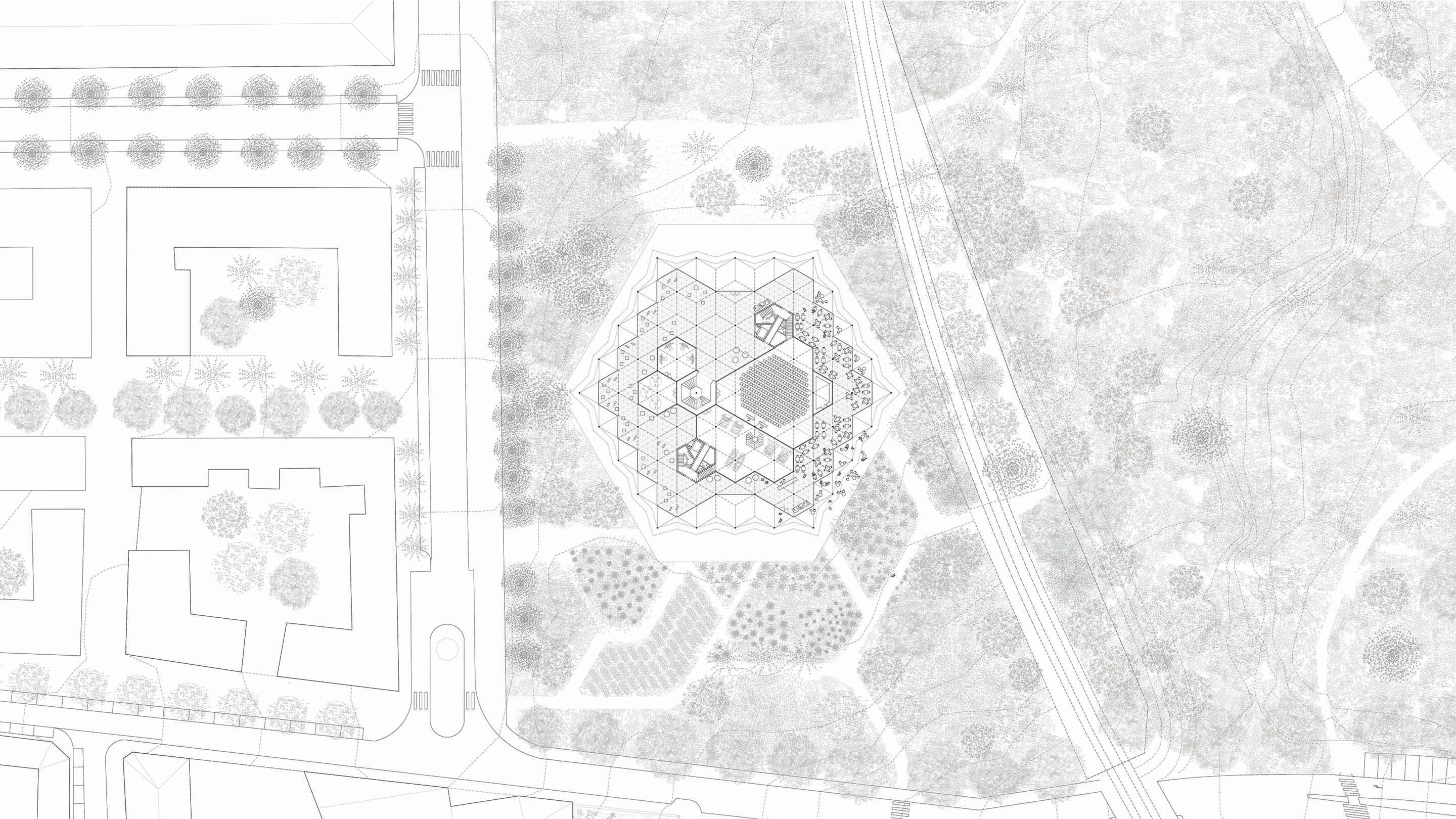














Giulia Anserini

Atelier Bearth

Filigree

Saint-Étienne–Manufacture Plaine Achille

A new university of textile. A place of interconnection between the multiple aspects of fabric. Students learn to master most of the different textile processes, going from the natural fibre and taking care of the plants to the reuse and recycling of the old fibres. Here, under the umbrella of sustainability, the engineered aspect of textiles come together with the more artistic one.

The university is structured from top down with the greenhouse for the non-indigenous plants, the preliminary laboratory of analysis, offices, and study space, the fourth and third floor are interconnected with the laboratories on the upper floor and the atelier and the workspace beneath. The same structure is applied to the second and first floor with the difference that this floor is dedicated to advanced projects.

The ground floor is more public. A cafe and an exhibition space are arranged around a central void where the recycling machines are located.

<https://www.diploma.arc.usi.ch/it/2021/studio-bearth-2021/giulia-anserini>